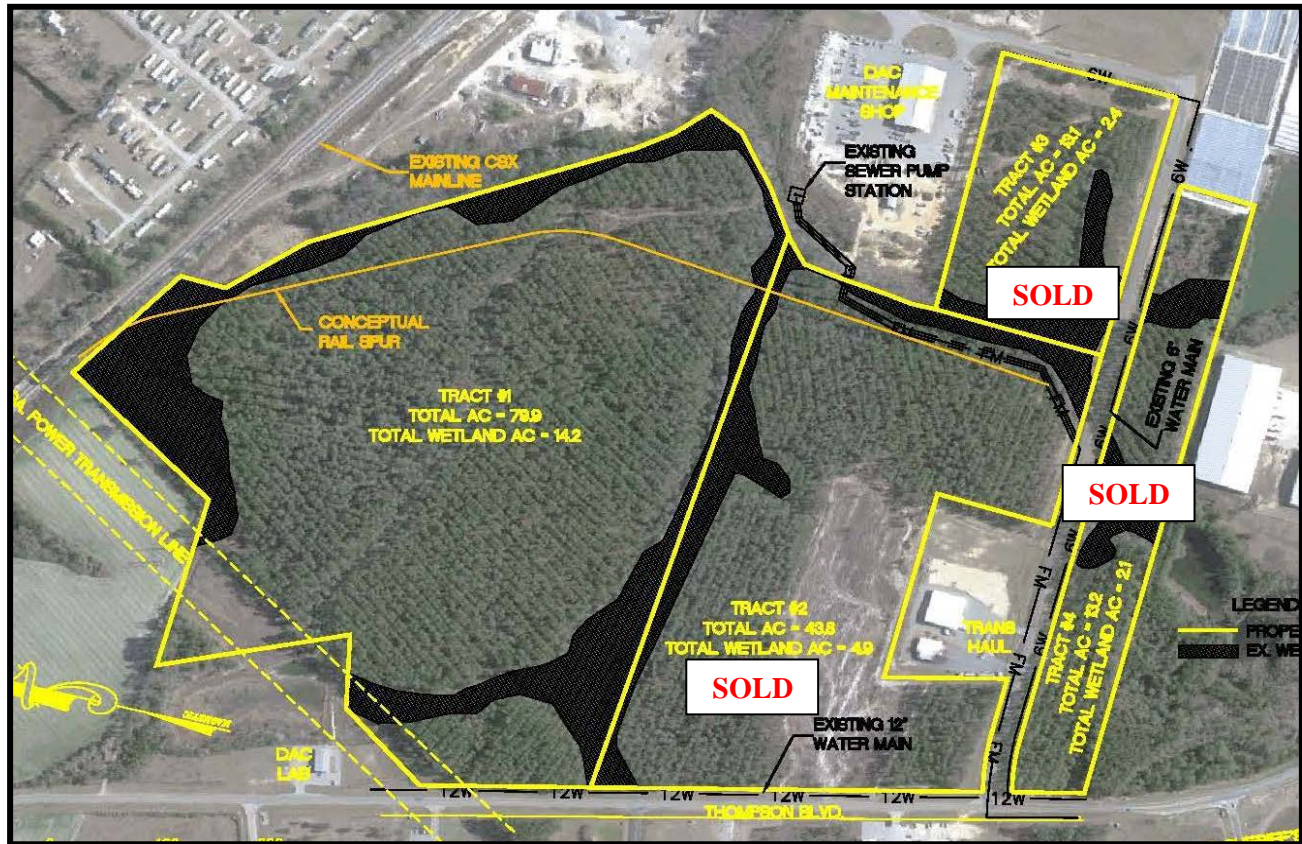


Perimeter West Extension

Douglas-Coffee County, Georgia

Rail served site



- **NEW Acquisition in 2014**
 - Wetland study complete; Phase 1 complete
 - Rail served, CSX
 - Water/sewer/natural gas available to site
 - Located in Perimeter West Industrial Park
 - Park neighbors: Premium Waters, Sunbelt Greenhouses, Diamond Builders
- **140+ ac**
 - Will subdivide to meet industry needs
 - Example of options shown above
- Easy access to 4-lane highways
- Centrally located between 4 interstate highways
- I-75, I-95, I-16, I-10 and Georgia's sea ports
- Direct 4-lane access to interstates
- \$15,000 per acre (negotiable upon project review)



Contact: Andrea Taylor, Executive Director
 Douglas-Coffee Chamber of
 Commerce & Economic Development
 Authority

Phone: 912-384-1873
 Cell Phone: 912-327-0830
 E-mail: ataylor@douglasga.org
 Website: www.douglasga.org

