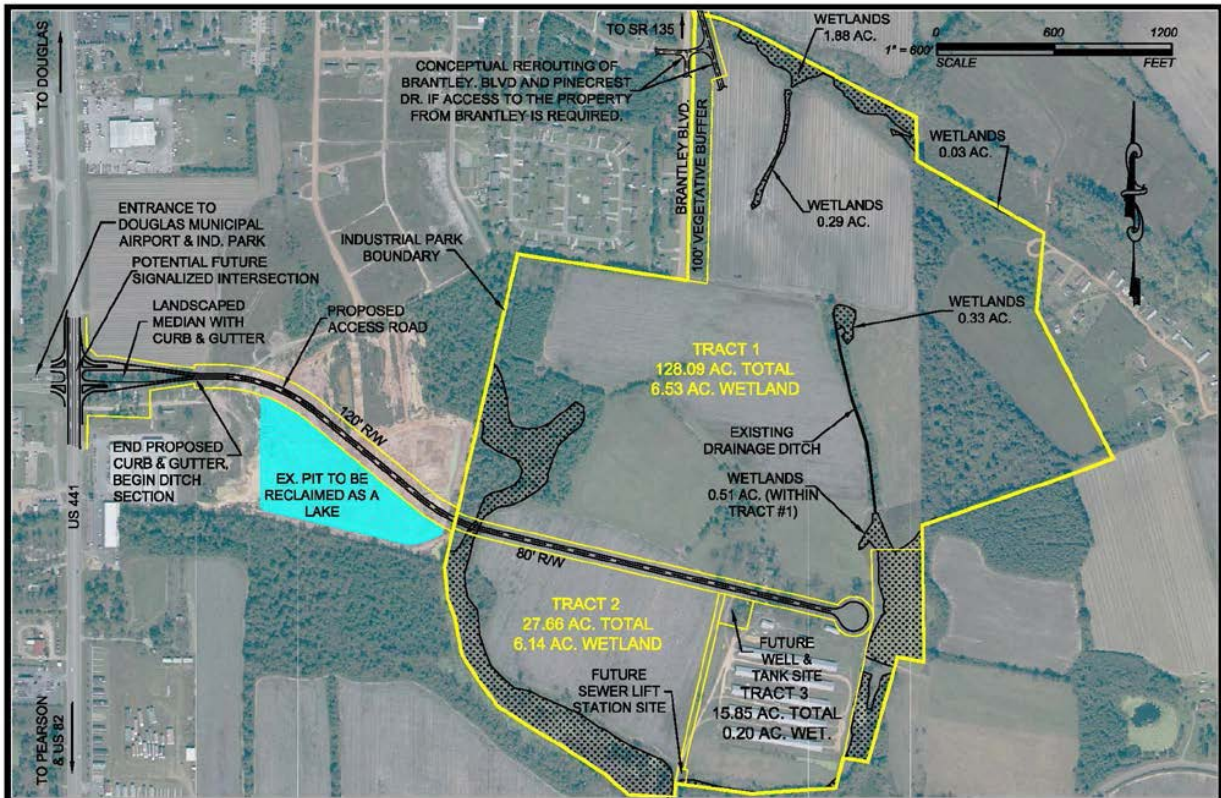


Satilla Park, Hwy 441S

Douglas-Coffee County, Georgia



160 acre site

- Will subdivide to meet prospective industry needs
- Direct access to 4-lane highways
- Centrally located between 4 interstate highways
- I-75, I-95, I-16, I-10 and Georgia's seaports
- Property Owner Douglas-Coffee County Economic Development Authority
- \$15,000 per acre (negotiable upon project review)



Contact: Andrea Taylor, Executive Director
Douglas-Coffee Chamber of
Commerce & Economic Development
Authority

Phone 912-384-1873
Cell Phone 912-327-0830
E-mail ataylor@douglasga.org
Website www.douglasga.org

DOUGLAS
COFFEE COUNTY • GA
chamber and economic development authority